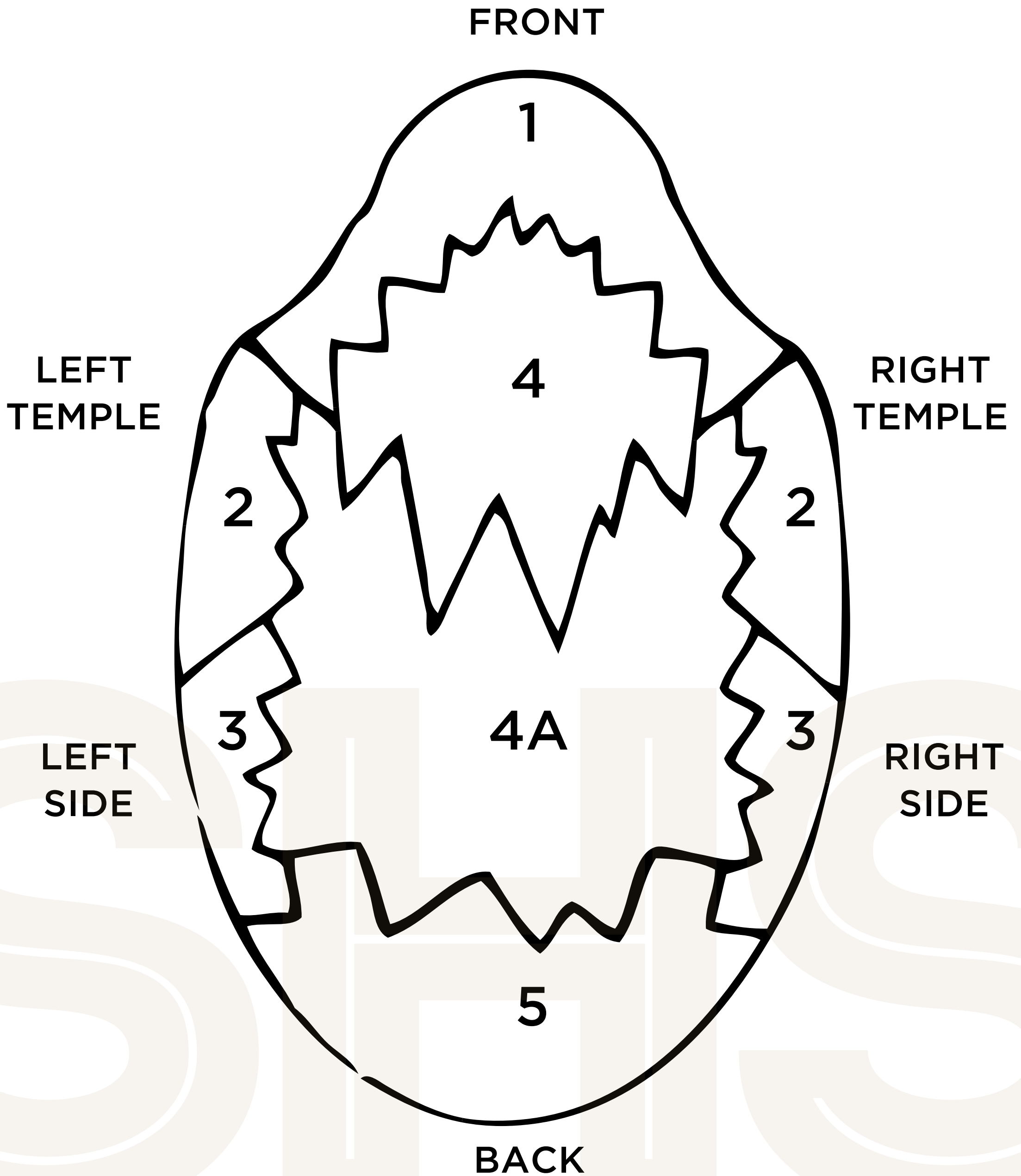


GUIDE TO HAIR

- HAIR AREA GUIDE
- HAIR DIRECTION / STYLE
- WAVES AND CURLS
- HAIR COLOURS
- % GREY
- BASE COLOURS
- BASE CONTOURS
- BASE HAIRLINE
- HAIR DENSITY

Hair Area Guide



Hair Direction / Style

CROWN



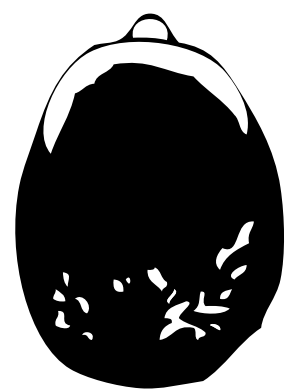
LEFT

CROWN



RIGHT

CROWN



CENTRE

INDEFINITE PART



LEFT

INDEFINITE PART



RIGHT

INDEFINITE PART

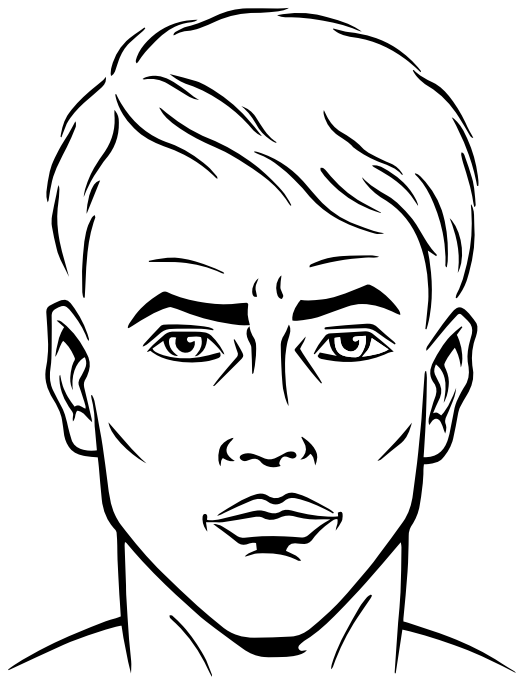


CENTRE

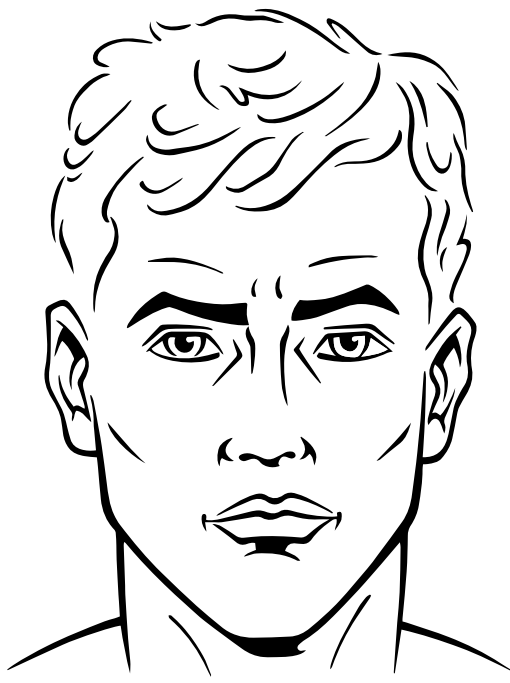
CROWN DIRECTION

“Neutral” is automatic in all Freestyle & Crown styles,
Spiral appropriate for flatter, shorter styles.

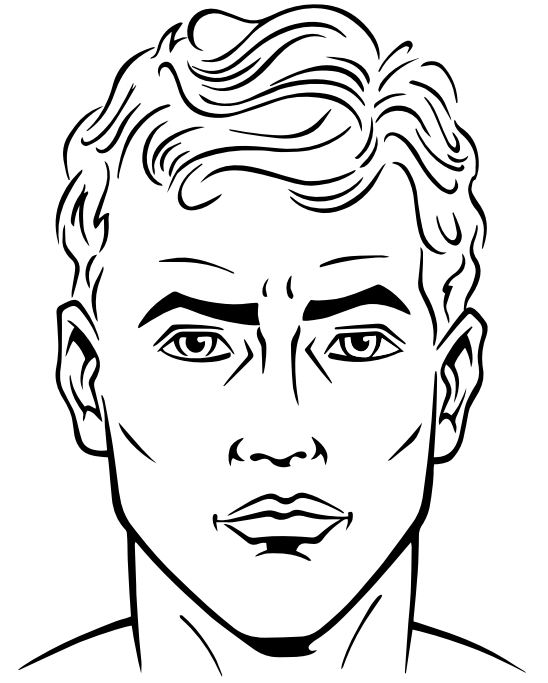
Waves and Curls



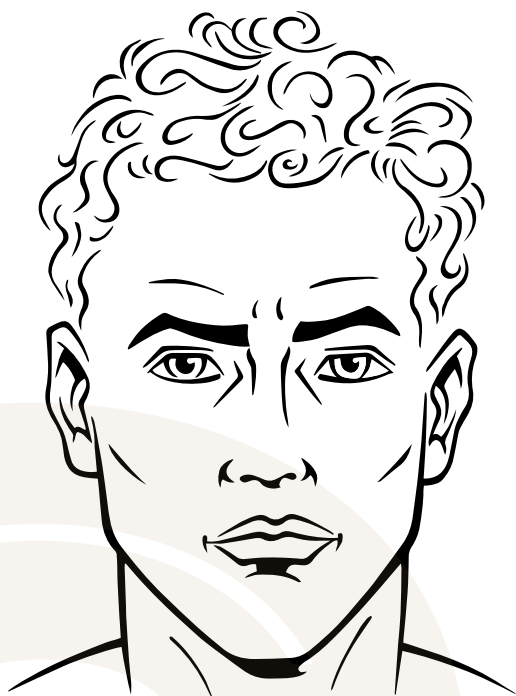
SLIGHTLY
WAVY



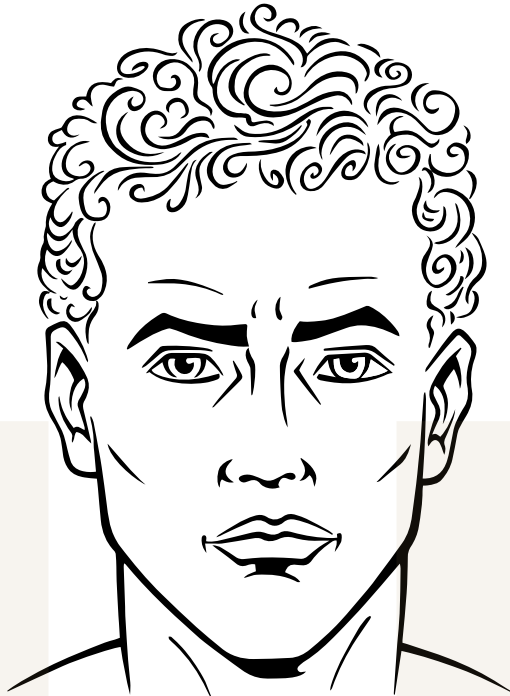
MEDIUM
WAVY



TIGHT
WAVY



LOOSE
CURLY



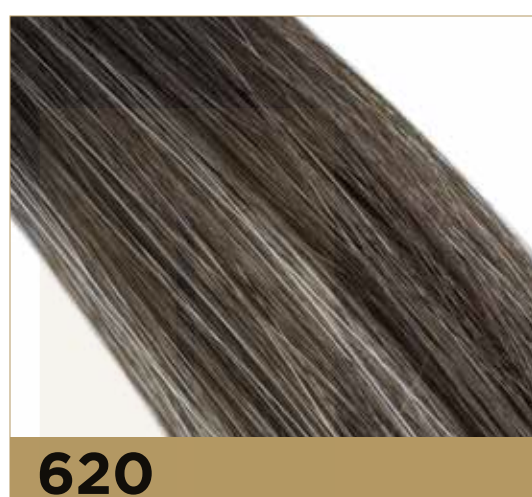
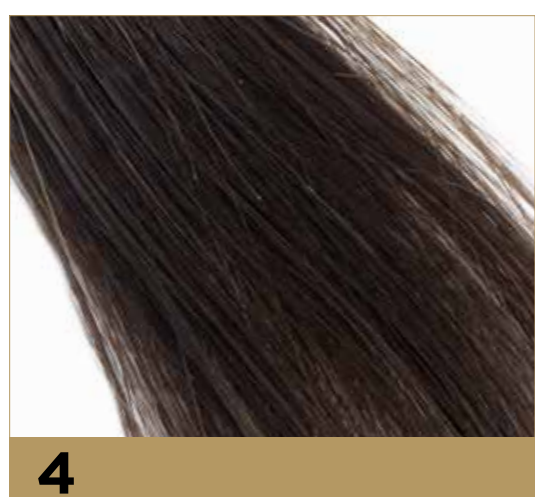
MEDIUM
CURLY



TIGHT
CURLY

The above wave and curl representation are intended as a guide only.
Individual results may vary.

Hair Colours



The above colour representations are intended as a guide and different screen resolutions or print formats may alter the colours or the users perception of the colours.

% Grey



10%



20%



30%



40%



50%



60%



70%



80%



90%

The above colour representations are intended as a guide and different screen resolutions or print formats may alter the colours or the users perception of the colours.

Base Colours



Base foundation / Foundation Colour / Tone is automatically “Caucasian” which is close to #2 above. If you require a darker skin tone than #2, you can select #3, #4 or #5.

The above colour representations are intended as a guide and different screen resolutions or print formats may alter the colours or the users perception of the colours.

Base Contours



FINE NYLON MICRO FILAMENT



FRENCH LACE



FINE WELD MONO



THIN POLYURETHANE

Base Hairline



FRENCH LACE FRONT



LACE FRONT



FLOATING LACE FRONT - STRAIGHT EDGE



FLOATING LACE FRONT - SCALLOPED EDGE

Hair Density



EXTRA LIGHT



LIGHT



LIGHT MEDIUM



MEDIUM



HEAVY*



EXTRA HEAVY*

The above density representations are intended as a guide only. Individual results may vary and be affected by factors including base type, hair colour, prewave, hair length and subjective perception.